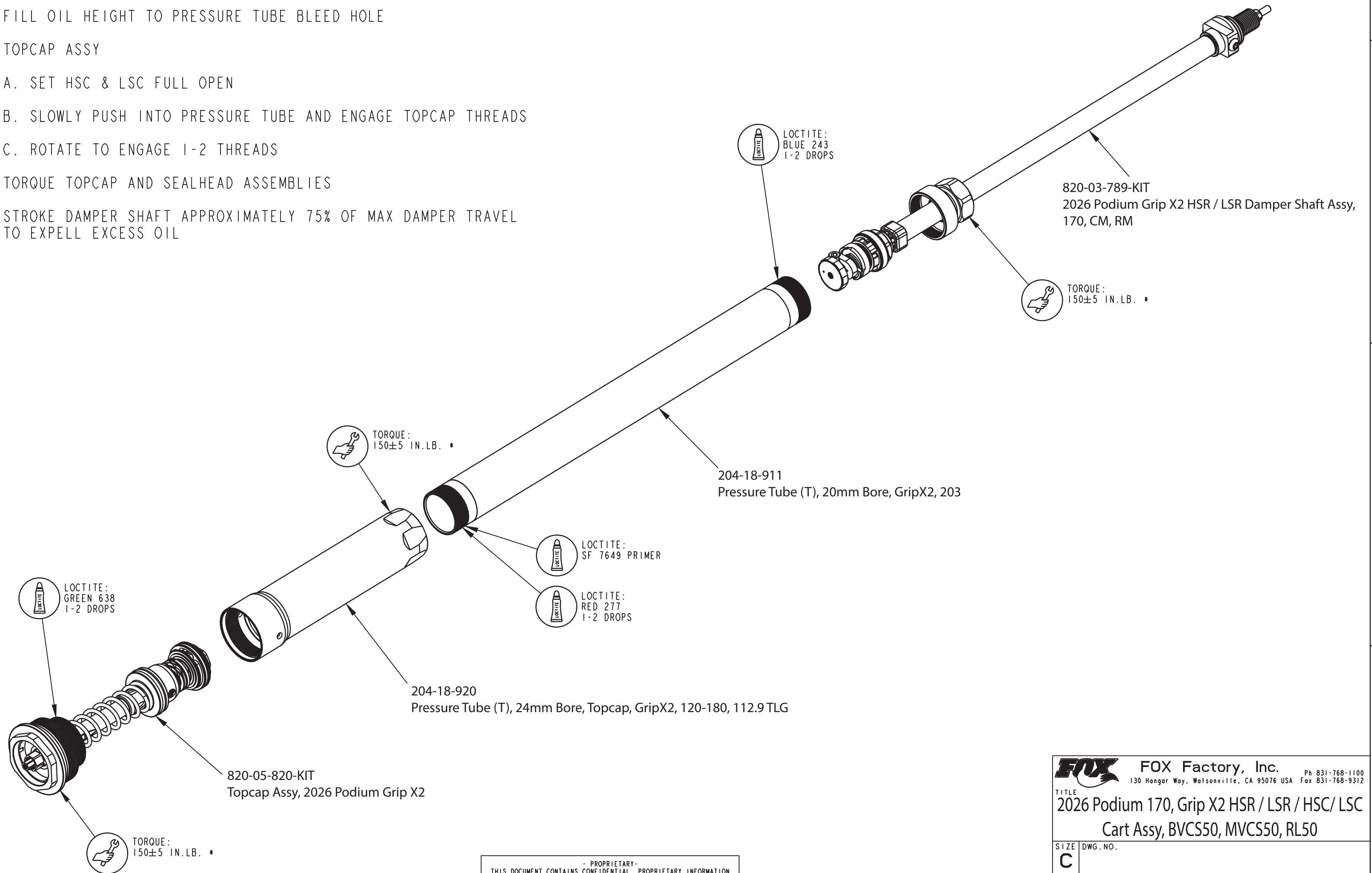


ASSEMBLY INSTRUCTIONS:

1. ASSEMBLE DAMPER SHAFT ASSEMBLY TO PRESSURE TUBE
2. FILL CARTRIDGE 1/2 FULL WITH OIL
3. STROKE DAMPER SHAFT 5X, THEN TOP OUT DAMPER SHAFT
4. FILL OIL HEIGHT TO PRESSURE TUBE BLEED HOLE
5. TOPCAP ASSY
  - A. SET HSC & LSC FULL OPEN
  - B. SLOWLY PUSH INTO PRESSURE TUBE AND ENGAGE TOPCAP THREADS
  - C. ROTATE TO ENGAGE 1-2 THREADS
6. TORQUE TOPCAP AND SEALHEAD ASSEMBLIES
7. STROKE DAMPER SHAFT APPROXIMATELY 75% OF MAX DAMPER TRAVEL TO EXPELL EXCESS OIL



- PROPRIETARY -  
 THIS DOCUMENT CONTAINS CONFIDENTIAL, PROPRIETARY INFORMATION  
 THAT IS FOX PROPERTY. DO NOT DISCLOSE TO OR DUPLICATE  
 FOR OTHERS EXCEPT AS AUTHORIZED BY FOX.

<b>FOX</b> <b>FOX Factory, Inc.</b>		Ph 831-768-1100
130 Hangar Way, Watsonville, CA 95076 USA		Fax 831-768-9312
TITLE <b>2026 Podium 170, Grip X2 HSR / LSR / HSC / LSC</b>		
Cart Assy, BVCS50, MVCS50, RL50		
SIZE	DWG. NO.	
<b>C</b>		
PLOT SCALE	1:1	SHEET 1 OF 1